

CERTIFICATE OF LOCATION OF GOVERNMENT CORNER

EAST QUARTER _____ Corner of Section 32 , Township 107N , Range 39W

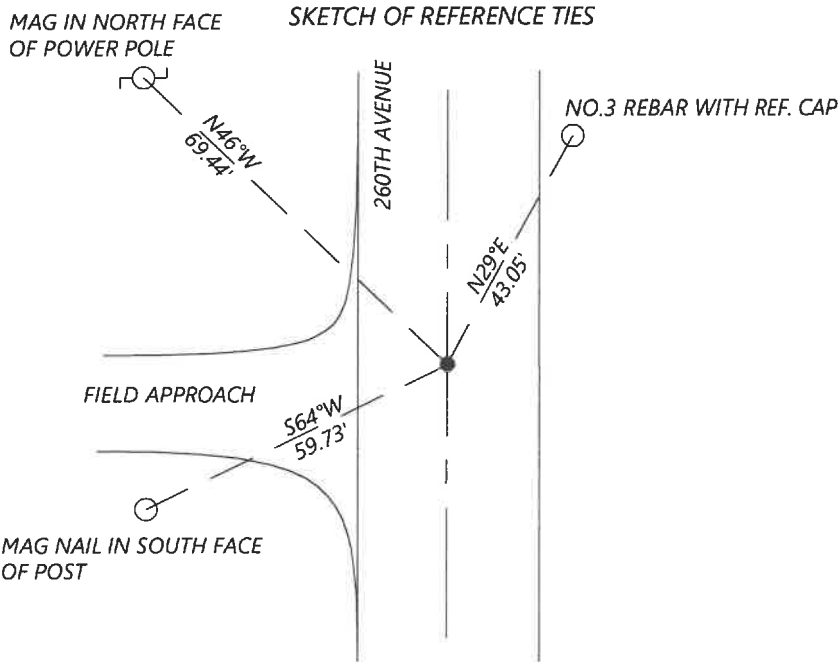
5th Principal Meridian, State of Minnesota, County of MURRAY

At the corner location shown on the sketch:

On 8/27/2020 found a MAG NAIL FLUSH IN ASPHALT
DATE

left monument as found lowered monument removed monument (explain)

On _____ placed a _____
DATE



N.T.S.

Statement of evidence for this corner location is on back of this page.

I hereby certify that this document was researched and prepared by me or under my direct supervision and that I am a licensed Land Surveyor under the laws of the State of Minnesota.

Signature [Handwritten Signature]

Date 6/16/2021 License No. 45874

Title:

- Land Surveyor Professional Engineer
 County Surveyor County Engineer

OFFICE OF THE COUNTY RECORDER

County of Murray

I hereby certify that this document was filed in the Co.

Recorder's office at _____ M. on the _____ day of _____ A.D. 20

County Recorder Karen Brom

by JUN 22 2021, Deputy

DOCUMENT NO. _____

Statement of Evidence:

East Quarter Corner of Section 32, Township 107 North, Range 39 West, 5th Principal Meridian, Murray County, Minnesota.

July 1861 GLO Notes: Set post in mound of earth.

May 1999 Highway department records for CSAH 14 show a stone.

May 2017 A survey in Section 32 by Zieske Land Surveying shows a found PK nail at the corner.

Sept. 2020 Westwood Professional Services searched and found a PK nail in asphalt road. Position fits well with 2017 Zieske survey. Accepting monument and set new ties.

Analysis of the recovered data, field evidence and survey measurements, indicates that the monument found is the correct perpetuation of this corner. For additional information concerning this corner please contact Westwood Professional Services.